



County Voter Information Guide

Presidential Primary Election

Tuesday, March 5, 2024

Polls are open 7am – 8pm

Tehama County Elections Department

633 Washington Street, Room 17, Red Bluff, CA 96080

Open Monday—Friday, 8am to 5pm

Office: 530-527-8190

Toll Free: 866-289-5307

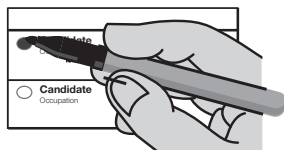
FAX: 530-527-1140

<https://www.co.tehama.ca.us/government/departments/elections/elections@co.tehama.ca.us>



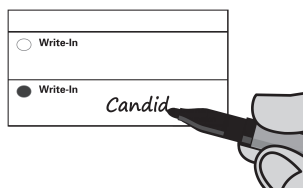
Instructions to Voters

To vote for the candidate you want, completely fill in the oval to the left of your choice.



To vote for a Measure fill in the oval next to the word "Yes" or "No".

To vote for a qualified write-in candidate, write the person's name in the place provided and fill in the oval to the left of the candidate's name.



Do not select more candidates than the number to be elected. You may vote in as many or as few contests as you want. A mistake in one contest does not affect the rest of your ballot.

Use a blue or black ink pen or the pen provided at the polls to mark your ballot. Do not use red ink or highlighter. Do not erase.

If you change your mind or make a mistake, contact the Elections Office at (530) 527-8190 for the procedure to obtain a replacement ballot.

Voting by mail: After voting, review your ballot and place it in the return envelope. Sign and date the envelope in the place provided and mail it back. Your envelope must be signed for your ballot to be counted.



VOTER'S GUIDE INFORMATION SECTION

The Following Pages Contain
Voter Information Applicable to your Ballot
Which May Include:

■ CANDIDATES' STATEMENTS

This guide section does not contain a complete list of candidates. A complete list of candidates appears on the Ballot. Each candidate's statement in this guide is volunteered by the candidate and is printed at the expense of the candidate.

The text, grammar and spelling are as submitted by the authors or candidates.

PROPOSITION 34 – CAMPAIGN SPENDING LIMITS

Among all state legislative candidates appearing on ballots in Tehama County, the following persons have pledged to abide by campaign spending limits as specified in the California Government Code. Candidates agreeing to the campaign spending limits also have the opportunity to publish a statement of qualifications in the local voter information guide.

State Senate, 1st District

MEGAN DAHLE, Party Preference: Republican
DAVID FENNELL, Party Preference: Republican

State Assembly, 3rd District

AARON DRAPER, Party Preference: Democratic
JAMIE "JAMES" GALLAGHER, Party Preference: Republican

TRUSTEDINFO2024

Election officials are your trusted sources for election information

Less than a month until Election Day March 5, 2024! Make sure you've got the correct election information by checking your voter information at: <https://www.sos.ca.gov/elections/cavoter>

Election Day is Tuesday, March 5, 2024! Don't know where to start? Trusted election material is available at: <https://www.co.tehama.ca.us/government/departments/elections/>

#Trusted Info 2024 is more than a hashtag! We're ensuring you get the most up-to-date voting information at our secure election website: <https://www.co.tehama.ca.us/government/departments/elections/>



Top-Two Candidates Open Primary Act

Under the Top 2 Open Primary Act, approved by the voters in 2010, only the top two candidates who received the top number of votes in the primary election will appear on the General Election Ballot. Candidates from these offices may have the same political party preference. Also write-in candidates are no longer allowed for these contests at the General Election. For more information, please contact the Tehama County Elections Department at (530) 527-8190 or toll-free (866) 289-5307.

The voter-nominated offices that the Top 2 Open Primary Act applies to are:

Governor	Lt. Governor	Secretary of State	Controller	Treasurer	Attorney General
Insurance Commissioner	Board of Equalization, District 1	U.S. Representative, District 1			
State Senator, District 1	State Assembly, District 3				

PARTY ENDORSEMENTS

Proposition 14, approved by the voters in 2010, authorizes political parties to endorse candidates to Voter-Nominated offices. This pamphlet contains the official endorsements that we received by the deadline and are printed as submitted.

The **Libertarian Party of California** endorses the following candidate(s).

<u>Candidate Name</u>	<u>Party Preference</u>	<u>Office</u>
Gail Lightfoot	Libertarian	United States Senate

The **Democratic Party** endorses the following candidate(s).

<u>Candidate Name</u>	<u>Party Preference</u>	<u>Office</u>
Rose Penelope Yee	Democratic	U.S. Representative, District 1

The **American Independent Party** endorses the following candidate(s).

<u>Candidate Name</u>	<u>Party Preference</u>	<u>Office</u>
James Bradley	Republican	United States Senate
Doug LaMalfa	Republican	U.S. Representative, District 1
David Fennell	Republican	State Senate, District 1
James Gallagher	Republican	State Assembly, District 3

The **Republican Party** endorses the following candidate(s).

<u>Candidate Name</u>	<u>Party Preference</u>	<u>Office</u>
Doug LaMalfa	Republican	U.S. Representative, District 1
James Gallagher	Republican	State Assembly, District 3

U.S. SENATE CONTEST

**There are two U.S. Senate contests on the
March 5, 2024 Presidential Primary Election ballot.**

- **One for the regular 6-year term ending on January 3, 2031.**
- **One for the remainder of the current term ending on January 3, 2025.**

You may vote for both contests.



Attention No Party Preference/No Party Voters

Your vote-by-mail ballot will not have presidential candidates on it.

As a voter who declined to provide a political party preference, you are considered a "No Party Preference (NPP)" voter, and your ballot will not have presidential candidates on it.

If you want to vote for U.S. President, you must request a ballot with presidential candidates from one of the following parties:

- American Independent Party
- Democratic Party
- Libertarian Party

You can request a replacement ballot with presidential candidates from your county elections office by submitting a No Party Preference Cross-over Ballot Notice and Application to your county elections office or by:

- Phone
- Email
- Fax
- Other electronic means

The application can be found online at:

<https://www.co.tehama.ca.us/government/departments/elections/>

If you vote at the polls:

Ask the poll worker for a ballot with either American Independent, Democratic, or Libertarian party presidential candidates when checking-in at a polling place or vote center.

If you want to vote for the Green, Peace and Freedom, or Republican parties' presidential candidates:

You **must** re-register with that specific party.

To re-register to vote online, go to registertovote.ca.gov. If you need to re-register after February 20, 2024, you can do so in person at the Tehama County Elections office, 633 Washington Street, Room 17, Red Bluff, CA 96080, Monday thru Friday 8am thru 5pm or at a polling place on Election Day.



**STATEMENT OF CANDIDATE FOR
U.S. REPRESENTATIVE, 1ST DISTRICT**

DOUG LAMALFA

Occupation: Farmer, Member of the United States House of Representatives

Party Pref: Republican

Education and Qualifications: The last several years have been difficult for too many. Inflation has taken a bite out of family budgets, gas and energy prices have soared, crime and lawlessness have crept into our rural communities. The challenges we face in Northern California just keep growing.

Bloated federal budgets fuel inflation and add to the national debt. As your representative in Congress, I voted for the Bi-Partisan Fiscal Responsibility Act to limit spending and save taxpayers \$2.1 trillion by cutting waste.

I continue to work to improve disaster recovery, including passing tax relief for the victims of wildfires. Increasing water supplies and protecting our water from being wasted by government mismanagement is critical. I have been able to deliver \$3.8 billion in low interest loans and grants for Sites Reservoir planning and construction.

Mass illegal immigration, cartel marijuana grows, the menace of fentanyl, tragic human trafficking are symptoms of the current Administration's refusal to control the border. I've voted to strengthen and defend the border. We must finally complete the wall, it's essential to our national security.

I have consistently worked to bring energy prices down and make America energy independent by increasing domestic oil and natural gas production as well as renewables such as biomass power and clean, cheap hydroelectric.

I will always fight to protect our Constitution and our individual rights. It's my privilege to serve you in Congress, to be your voice. I'd be honored to receive your vote. Thank you.
www.DougLaMalfa.com or call 530-712-3675.

s/ Doug LaMalfa



**STATEMENT OF CANDIDATE FOR
U.S. REPRESENTATIVE, 1ST DISTRICT**

ROSE PENELOPE YEE

Occupation: Business Leader, Finance Professional, Investor

Education and Qualifications: Like you, I'm a proud American.

I have a vision for America: a nation where we live the very best possible lives we can live, where everyone has the opportunity to achieve the American dream.

But for many, the American dream seems so far out of reach. The struggle to make ends meet and keep ones head above water is real.

As such, I will focus on uplifting Americans' financial wellbeing. Parents should earn wages for a full day's work enough to feed, clothe, and house their families without needing a second or third job to do it.

I will work towards an America that works for all Americans:

Healthcare for Americans: Quality healthcare through Medicare for All.

Education for Americans: Adequately fund our schools and give youth access to trade schools, public colleges, and universities without crippling student loans.

Security for Americans: Protect our seniors by preserving and expanding Social Security, uphold workers' rights, and create a Federal Jobs Guaranty to provide Economic Security for all.

Safety for Americans: Ensure a healthy and safe environment that promotes our well-being.

Care for Americans: An economy where budgets and laws passed put the welfare of Americans first, rather than the profiteering of billionaires.

I'm inviting you to join me on this journey. With your vote, we can realize our shared vision of a kinder, gentler America with thriving communities and caring neighborhoods.

It will be an honor to get your vote and serve you in Congress.

Thank you.

www.roseforcongress.com

s/ Rose P. Yee



**STATEMENT OF CANDIDATE FOR
STATE SENATE, DISTRICT 1**

MEGAN DAHLE

Occupation: Farmer/Businesswomen/Mother

Education and Qualifications: As an Assemblywoman, I have championed the issues of the North State in Sacramento and have successfully secured tens of millions of dollars for our communities.

There is more work to be done.

California's high cost of living is forcing families to decide between buying groceries or putting gas in their cars. By voting to suspend the state's 54 cents/gallon gas tax, I fought to save consumers over \$1,600 a year and make it less expensive for farms and manufacturers to get products to market.

Families can't afford higher taxes and increased healthcare costs. That's why I have repeatedly opposed efforts to raise our gas, sales, property and other taxes - while working to reduce healthcare costs.

Crime is out of control and we need criminals off our streets.

I have pushed legislation to crack down on smash-and-grab robberies, co-authored a law to more severely punish human traffickers and backed measures to more effectively prosecute fentanyl dealers.

To reduce homelessness, I've supported legislation that addresses mental health and addiction issues that are often a root cause.

By working to improve forestry management, properly maintain power lines and make fire insurance more affordable, I am fighting to protect homes from wildfires.

The California Professional Firefighters support my re-election. Please join them and my campaign to get California back on track.

Please visit www.votemegandahle.com to learn more about my values.

I'd be honored to have your vote.

s/ Megan Dahle



**STATEMENT OF CANDIDATE FOR
STATE SENATE, DISTRICT 1**

DAVID FENNEL

Age: 54

Occupation: Entrepreneur

Education and Qualifications: My name is David Fennell and I am running to be your State Senator. We have been through a lot together in Northern California with rising costs, increased crime, decreased water, fire outbreaks & economic uncertainty. Our great region is constantly being outvoted by more populated Los Angeles who doesn't understand our problems or share our values.

Why are violent criminals allowed to rob at will?

Why are we releasing water farmers need into the ocean? Why are forests mismanaged, resulting in historic burns?

Why are bureaucrats being allowed to destroy business & innovation? Why are the values of our Northern California families under assault?

The answer is we have a lack of leadership in Sacramento.

Newly redrawn Senate District 1 calls for new leadership! I have a college degree & 30+ years of real-world business experience & will bring practical solutions to Sacramento. Our region is the most beautiful! While others leave California, I visited all our counties. 60+ campaign stops. Time to elect a fighter! Will you join me in the fight to save our State?

I will not let you down!

Vote David Fennell for State Senate!
www.fennellforsenate.com

s/ David Fennell





Language assistance

The following election materials will be translated in Spanish and available at all polling places:

- A copy of the ballot
- Voting Instructions
- State Voter Guide
- Voter Bill of Rights

All Tehama County polling places provide a Spanish facsimile ballot. A list of polling places and their locations can be found at <https://www.co.tehama.ca.us/government/departments/elections/>

Los siguientes materiales electorales se traducirán al español y estarán disponibles en todos los lugares de votación:

- una copia de la boleta electoral
- las instrucciones para votar
- la Guía estatal para votantes
- la Declaración de Derechos de los Votantes

Todos los lugares de votación del condado de Tehama proporcionan un facsímil de la boleta en español. Se puede encontrar una lista de los lugares de votación y sus ubicaciones en

<https://www.co.tehama.ca.us/government/departments/elections/>

Requesting a facsimile ballot

You may request a Spanish facsimile ballot be mailed or emailed to you by contacting the elections office via mail, telephone, or email.

Cómo solicitar una boleta facsímil

Usted puede solicitar que se le envíe una boleta facsímil en español por correo postal o por correo electrónico si se comunica con la Oficina de Elecciones por correo postal, teléfono o correo electrónico.

Voting assistance

As a voter, you may bring up to two individuals with you to your polling place to help you cast your ballot, as long as those individuals do not represent your employer or your union. Your polling place will have copies of the ballot in Spanish and may have poll workers ready to assist you who speak this language.

Asistencia para votar

Como votante, usted puede ir al lugar de votación acompañado por hasta dos personas para que le ayuden a emitir su boleta, siempre y cuando esas personas no representen ni a su empleador ni a su sindicato. Su lugar de votación tendrá copias de las boletas electorales en español y es posible que haya trabajadores electorales listos para ayudarle que hablen este idioma.


Background

California law requires the Secretary of State in January before the primary election for Governor to identify which precincts have 3% or more of the voting-age residents who are members of a single language minority and lack sufficient skills in English to vote without assistance.

For more information in English, please contact the elections office:

 elections@co.tehama.ca.us

 (530) 527-8190 or Toll Free (866) 289-5307

 (530) 527-1140



Accessible voting

At the polling place



To check polling place accessibility, look for the wheelchair symbol on the back cover of this pamphlet. If your site is accessible, below the symbol you will find the word YES.

In some polling places, temporary thresholds, ramps, signage, cones, and door props, are used to improve access to the facility.

Curbside voting

If your polling place is not accessible, you may vote on a paper ballot from a nearby accessible location, including a car. A poll worker will qualify you to vote and return the voted ballot to the polling place. Some polling locations have a call button that rings inside the polling place.

Accessible voting system

Each polling place in the county has an electronic accessible voting machine with:

- an audio option that reads the ballot to you
- a universal plug for personal assistance device
- large print (24 points)

Voting information

Audio versions of the information about state candidates and/or measures and local candidates and/or measures are available upon request. The recordings are available approximately four weeks before the election.

How to request assistance

To request any of these options for assistance with accessible voting:

Phone Tehama County: (530) 527-8190 or toll free (866) 289-5307

Disability Rights of California will operate a statewide Election Day hotline

7am to 8pm on Election Day: March 5, 2024

1-888-569-7955

You can now vote from home on a computer or smart phone using Remote Accessible Vote By Mail (RAVBM). RAVBM allows you to mark your ballot electronically then print it and submit it by fax: 530-527-1140 or by mail to P.O. Box 250 Red Bluff, CA 96080. Call our office for more information or go online to <https://www.co.tehama.ca.us/government/departments/elections/>



WARNING: ELECTIONEERING PROHIBITED!

VIOLATIONS CAN LEAD TO FINES AND/OR IMPRISONMENT.

WHERE:

- Within the immediate vicinity of a person in line to cast their ballot or within 100 feet of the entrance of a polling place, curbside voting or drop box the following activities are prohibited.

WHAT ACTIVITIES ARE PROHIBITED:

- *DO NOT* ask a person to vote for or against any candidate or ballot measure.
- *DO NOT* display a candidate's name, image, or logo.
- *DO NOT* block access to or loiter near any ballot drop boxes.
- *DO NOT* provide any material or audible information for or against any candidate or ballot measure near any polling place, vote center, or ballot drop box.
- *DO NOT* circulate any petitions, including for initiatives, referenda, recall, or candidate nominations.
- *DO NOT* distribute, display, or wear any clothing (hats, shirts, signs, buttons, stickers) that include a candidate's name, image, logo, and/or support or oppose any candidate or ballot measure.
- *DO NOT* display information or speak to a voter about the voter's eligibility to vote.

The electioneering prohibitions summarized above are set forth in Article 7 of Chapter 4 of Division 18 of the California Elections Code.

ADVERTENCIA: ¡ESTÁ PROHIBIDO HACER CAMPAÑA ELECTORAL!

LAS INFRACCIONES PUEDEN RESULTAR EN MULTA O PRISIÓN.

¿DÓNDE?:

- Muy cerca de una persona que está en la cola esperando para emitir su voto o a 100 pies (30 metros) de la entrada de un lugar de votación, de una votación en la acera o un buzón, las siguientes actividades están prohibidas.

LAS SIGUIENTES ACTIVIDADES ESTÁN PROHIBIDAS:

- *NO* le pida a una persona que vote a favor o en contra de algún candidato o medida electoral.
- *NO* muestre el nombre, la imagen ni el logo de un candidato.
- *NO* bloquee el acceso a ninguna urna electoral ni merodee cerca de ellas.
- *NO* ofrezca ninguna información material o acústica que esté a favor o en contra de algún candidato o medida electoral cerca de un lugar de votación, centro de votación o urna electoral.
- *NO* haga circular ninguna petición, como para iniciativas, referendos, revocaciones o nominaciones de candidatos.
- *NO* distribuya, muestre ni use ropa (sombreros, remeras, carteles, insignias, calcomanías) que incluya el nombre, la imagen o el logo de un candidato, o apoye o se oponga a un candidato o medida electoral.
- *NO* muestre información ni hable con un elector sobre la elegibilidad de su elegibilidad para votar.

Las prohibiciones de la campaña electoral resumidas anteriormente figuran en el capítulo 7 del capítulo 4 de la división 18 del Código electoral de California.

52-WEP-0324



Sign up to track your ballot

Where's my ballot?

The Tehama County Election's office is now offering voters a new way to track and receive notifications on the status of their vote-by-mail ballot. Sign-up at WheresMyBallot.sos.ca.gov to receive automatic email, SMS (text), or voice call notifications about your ballot.



Voting by mail is **SAFE** and **EASY**.

After marking your choices on your ballot, simply:



Seal it.

Secure your ballot inside the envelope from your county elections office.



Sign it.

Make sure the **signature on your ballot envelope matches** the one on your CA driver license / state ID, or the one you provided when registering. Your county elections office will compare them to protect your vote.



Return it.

By mail - Make sure your ballot is postmarked by **March 5, 2024**.
No stamp required!

OR

In person - Drop your ballot off at a secure drop box, polling place, or county elections office by **8pm on March 5, 2024**.



Track it.

You can sign up at wheresmyballot.sos.ca.gov for alerts by text (SMS), email, or voice call on the status of your vote-by-mail ballot.

Facts about voting by mail in Tehama County

All Tehama County voters will receive a vote-by-mail ballot for the **March 5, 2024** election. Your county elections office will begin mailing ballots beginning **February 5, 2024**.

- Postage is pre-paid on all mailed ballots.
- All signatures are compared to the signature on your voter registration card.
- If the signature doesn't match, you will be contacted and be given an opportunity to correct the issue.
- You do not have to vote on all contests. Those you do vote on will still count.
- All mailed ballots are counted, regardless if the contest is close.
- If you make a mistake, you can ask for a replacement ballot.

For information about voting in Tehama County, please visit our website at

<https://www.co.tehama.ca.us/government/departments/elections> / or call (530)527-8190.



TEHAMA COUNTY POLLING LOCATIONS FOR ELECTION DAY

All polling locations will be open on Tuesday, March 5, 2024 from 7:00 am to 8:00 pm.

- BOWMAN COMMUNITY CHURCH, 18335 BOWMAN RD.
BEND ELEMENTARY SCHOOL, 22270 BEND FERRY RD.
RED BLUFF COMMUNITY CENTER, 1500 S JACKSON ST.
FAIRGROUNDS TEHAMA ROOM, 650 ANTELOPE BLVD
SACRED HEART PARISH HALL, 2355 MONROE ST.
DEPARTMENT OF EDUCATION, 1135 LINCOLN ST.
EL CAMINO METHODIST CHURCH, 8345 HWY 99W
CORNING CITY HALL, 794 3RD ST.
MT OLIVE LUTHERAN CHURCH, 341 SOLANO ST.
CORNING VETERANS HALL, 1620 SOLANO ST.
LOS MOLINOS VETERANS HALL, 7980 SHERWOOD BLVD.
CHRIST COMMUNITY CHURCH VINA, 26370 5TH ST.

LAKE CALIFORNIA LAKE CLUB, 22431 RIO ALTO DR.
RIDGEWAY PARK, 19725 RIDGE RD.
DIBBLE CREEK FIRE STATION, 20230 HWY 36W
RED BLUFF MOOSE LODGE, 11745 HWY 99W
TEHAMA COUNTY ADMINISTRATION, 727 OAK ST.
FIRST UNITED METHODIST CHURCH, 525 DAVID AVE.
GERBER BIBLE FELLOWSHIP, 301 SAMSON AVE.
FIRST BAPTIST CHURCH, 506 COLUSA ST.
RANCHO TEHAMA REC HALL, 17605 PARK TERRACE
CONE METHODIST CHURCH, 11220 HWY 99E
MILL CREEK BAPTIST CHURCH, 25145 TAFT ST.
CAPAY JT. ELEM. SCHOOL, 7504 CUTTING AVE.

CHURCH OF JESUS CHRIST OF LATTER-DAY SAINTS, 545 BERRENDOS AVE.

TRINITY LANDMARK MISSIONARY BAPTIST CHURCH, 20910 HAMPTON RHODES DR.

TEHAMA COUNTY ELECTIONS OFFICE, 633 WASHINGTON ST. RM. 17, RED BLUFF

TEHAMA COUNTY VOTE-BY-MAIL BALLOT DROP-OFF LOCATIONS

IMPORTANT: Hours listed for each drop box are the business hours for the facility at the time of printing. These Drop Boxes are maintained by the Elections office and ballots will be retrieved at regular intervals throughout the dates listed below. **ALL** Drop Boxes will be locked and/or removed at 8:00PM on March 5, 2024.

February 6th thru March 5th

- | | | |
|--|---------------------------------|---|
| • Inside - SavMor | 590 Solano St., Corning | Hours: 7:00AM - 10:00PM
Daily |
| • Inside - NuWay Market | 8049 Hwy 99E, Los Molinos | Hours 7:00AM - 9:00PM
Daily |
| • Inside – Tehama County Library | 545 Diamond Ave., Red Bluff | Hours 1:00PM - 7:00PM
Monday thru Friday |
| • Inside – Food Maxx | 94 Belle Mill Rd., Red Bluff | Hours 6:00AM - 12:00AM
Daily |
| • Inside – Historic Courthouse Lobby | 633 Washington St., Room 17, RB | Hours 8:00AM - 5:00PM
Monday thru Friday |
| • Outside – Tehama County Administration 727 Oak St., RB (parking lot) | | 24 Hours a day |



Sign up to track your ballot

Where's my ballot?

The Tehama County Election's office is now offering voters a new way to track and receive notifications on the status of their vote-by-mail ballot. Sign-up at WheresMyBallot.sos.ca.gov to receive automatic email, SMS (text), or voice call notifications about your ballot.



If you make a mistake on your ballot contact the Elections Office at (530) 527-8190 or toll free (866) 289-5307 for the procedure to obtain a replacement ballot.

**FOR THE MARCH 5, 2024, STATE PRESIDENTIAL PRIMARY ELECTION
EVERY VOTER WILL RECEIVE A BALLOT IN THE MAIL**

We encourage you to vote the ballot you receive, however your polling place for the March 5, 2024 Presidential Primary Election is below.



POLLS OPEN AT 7 A.M. AND CLOSE AT 8 P.M.

Your polling place may have changed. Visit: <https://www.co.tehama.ca.us/government/departments/elections/>

