

County Voter Information Guide

Consolidated General Election
Tuesday, November 8, 2022

Polls are open 7am – 8pm

← Polling place on the back cover

Tehama County Elections Department
633 Washington Street, Room 17, Red Bluff, CA 96080
Open Monday—Friday, 8am to 5pm

Office: 530-527-8190
Toll Free: 866-289-5307
FAX: 530-527-1140

<http://www.co.tehama.ca.us>
elections@co.tehama.ca.us



Instructions to Voters

To vote for the candidate you want, completely fill in the oval to the left of your choice.

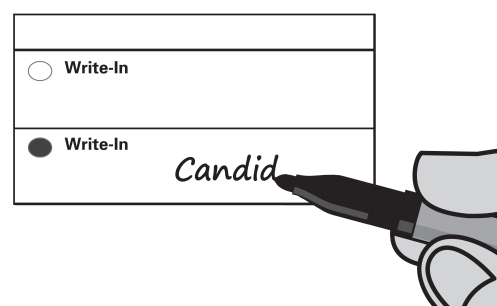
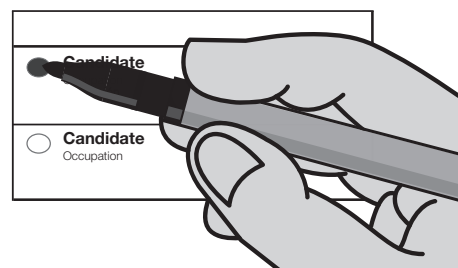
Use a blue or black ink pen or the pen provided at the polls to mark your ballot. Do not use red ink or highlighter. Do not erase.

If you change your mind or make a mistake, return the ballot to the Election Clerk and a replacement ballot will be issued to you.

To vote for a qualified write-in candidate, write the person's name in the place provided and fill in the oval to the left of the candidates name.

Voting by mail: After voting, review your ballot and place it in the return envelope. Sign and date the envelope in the place provided and mail it back. Your envelope must be signed for your ballot to be counted.

At the polls: After voting, review your ballot and place your ballot in the secrecy sleeve and feed the ballot into the tabulator at the polling place.



U.S. SENATE CONTEST

**There are two U.S. Senate contests
on the November 8, 2022 General Election ballot.**

- The first contest is for the regular election for the full 6-year term ending on January 3, 2029.
- The second contest is a special vacancy election (the current officeholder is temporarily filling a vacancy) for the remainder of the term ending on January 3, 2023.

You may vote for both contests.

COUNTY VOTER INFORMATION GUIDES AVAILABLE ONLINE

Reasons to Go Green, Go Paperless

It's Convenient

In just a few keystrokes you can access your Sample Ballot & County Voter Information Guide anytime, anywhere. There's no need to keep track of your paper copy, the information is always available online!

It's Flexible

You can view, save, print part or all of your Sample Ballot & County Voter Information Guide and you can do this as many times as you like

It's Paperless

You won't have multiple copies of the Sample Ballot & County Voter Information Guide cluttering up your home and filling up your recycle bin.

It's Your Choice

If you decide that you'd rather receive a paper copy of the Sample Ballot & County Voter Information Guide, you can. Simply call or email our office and let us know. 530-527-8190 or elections@co.tehama.ca.us.

It's Free

There's no cost to you, the voter, to receive the Sample Ballot & County Voter Information Guide online. If you choose to receive a paperless copy, it saves taxpayer dollars.

It's Good for the Planet

It saves trees, reduces the carbon footprint and lessens the load in our landfills.

52-USS (1122)



OFFICIAL BALLOT
CONSOLIDATED GENERAL ELECTION

COUNTY OF TEHAMA

TUESDAY, NOVEMBER 8, 2022

1ST CONGRESSIONAL, 1ST SENATE, AND 3RD ASSEMBLY DISTRICTS

PCT: 0030120-8

BT-8

INSTRUCTIONS TO VOTERS:

To vote for a candidate for Chief Justice of California; Associate Justice of the Supreme Court; Presiding Justice, Court of Appeal; or Associate Justice, Court of Appeal, mark the voting target next to the word "Yes." To vote against that candidate, mark the voting target next to the word "No." To vote for any other candidate of your selection, mark the voting target next to the candidate's name. Where two or more candidates for the same office are to be elected, place a mark next to the names of all candidates for the office for whom you desire to vote, not to exceed, however, the number of candidates to be elected.



To vote for a qualified write-in candidate, write the person's name in the blank space provided for that purpose after the names of the other candidates for the same office.



Marking the ballot outside of the designated space to vote for a candidate or measure may compromise the secrecy of the ballot.

To vote on any measure, mark the voting target next to the word "Yes" or next to the word "No."

If you wrongly mark, tear, or deface this ballot, return it to the precinct board member and obtain another.

ON VOTE BY MAIL BALLOTS MARK WITH PEN.

VOTER-NOMINATED AND NONPARTISAN OFFICES:

All voters, regardless of the party preference they disclosed upon registration, or refusal to disclose a party preference, may vote for any candidate for a voter-nominated or nonpartisan office. The party preference, if any, designated by a candidate for a voter-nominated office is selected by the candidate and is shown for the information of the voters only. It does not imply that the candidate is nominated or endorsed by the party or that the party approves of the candidate. The party preference, if any, of a candidate for a nonpartisan office does not appear on the ballot.

VOTER-NOMINATED OFFICES	INSURANCE COMMISSIONER	MEMBER OF THE STATE ASSEMBLY
STATE Vote for One	Vote for One	MEMBER OF THE STATE ASSEMBLY, 3RD DISTRICT Vote for One
GOVERNOR Vote for One	<input type="radio"/> ROBERT HOWELL Party Preference: Republican Cybersecurity Equipment Manufacturer	<input type="radio"/> JAMES GALLAGHER Party Preference: Republican Assemblyman/Farmer/Businessman
<input type="radio"/> BRIAN DAHLE Party Preference: Republican Senator/Farmer	<input type="radio"/> RICARDO LARA Party Preference: Democratic Insurance Commissioner	<input type="radio"/> DAVID LEON ZINK Party Preference: Democratic Consultant/Community Organizer
<input type="radio"/> GAVIN NEWSOM Party Preference: Democratic Governor of California	MEMBER, STATE BOARD OF EQUALIZATION, 1ST DISTRICT Vote for One	NONPARTISAN OFFICES
LIEUTENANT GOVERNOR Vote for One	<input type="radio"/> TED GAINES Party Preference: Republican Board of Equalization Member	JUDICIAL
<input type="radio"/> ANGELA E. UNDERWOOD JACOBS Party Preference: Republican Businesswoman/Deputy Mayor	<input type="radio"/> JOSE S. ALTAMIRANO Party Preference: Democratic Business Operations Manager	FOR CHIEF JUSTICE OF CALIFORNIA
<input type="radio"/> ELENI KOUNALAKIS Party Preference: Democratic Lieutenant Governor	UNITED STATES SENATOR There are two U.S. Senate contests on this ballot. • One for the regular 6-year term ending January 3, 2029 • One for the remainder of the current term ending January 3, 2023 You may vote for both contests	<input type="radio"/> YES <input type="radio"/> NO
SECRETARY OF STATE Vote for One	UNITED STATES SENATOR (FULL TERM) Vote for One	FOR ASSOCIATE JUSTICE OF THE SUPREME COURT
<input type="radio"/> ROB BERNOSKY Party Preference: Republican Chief Financial Officer	<input type="radio"/> ALEX PADILLA Party Preference: Democratic Appointed United States Senator	Shall Associate Justice of the Supreme Court GOODWIN LIU be elected to the office for the term provided by law?
<input type="radio"/> SHIRLEY N. WEBER Party Preference: Democratic Appointed California Secretary of State	<input type="radio"/> MARK P. MEUSER Party Preference: Republican Constitutional Attorney	<input type="radio"/> YES <input type="radio"/> NO
CONTROLLER Vote for One	UNITED STATES SENATOR (PARTIAL/UNEXPIRED TERM) Vote for One	FOR ASSOCIATE JUSTICE OF THE SUPREME COURT
<input type="radio"/> MALIA M. COHEN Party Preference: Democratic California State Board of Equalization Member	<input type="radio"/> ALEX PADILLA Party Preference: Democratic Appointed United States Senator	Shall Associate Justice of the Supreme Court MARTIN J. JENKINS be elected to the office for the term provided by law?
<input type="radio"/> LANHEE J. CHEN Party Preference: Republican Fiscal Advisor/Educator	UNITED STATES REPRESENTATIVE Vote for One	<input type="radio"/> YES <input type="radio"/> NO
TREASURER Vote for One	UNITED STATES REPRESENTATIVE, 1ST DISTRICT Vote for One	FOR ASSOCIATE JUSTICE OF THE SUPREME COURT
<input type="radio"/> FIONA MA Party Preference: Democratic State Treasurer/CPA	<input type="radio"/> DOUG LAMALFA Party Preference: Republican Farmer/US Representative	Shall Associate Justice of the Supreme Court JOSHUA P. GROBAN be elected to the office for the term provided by law?
<input type="radio"/> JACK M. GUERRERO Party Preference: Republican Councilmember/CPA/Economist	<input type="radio"/> MAX STEINER Party Preference: Democratic US Army Reservist	<input type="radio"/> YES <input type="radio"/> NO
ATTORNEY GENERAL Vote for One		FOR ASSOCIATE JUSTICE, COURT OF APPEAL, THIRD DISTRICT
<input type="radio"/> ROB BONTA Party Preference: Democratic Appointed Attorney General of the State of California		Shall Associate Justice STACY BOULWARE EURIE be elected to the office for the term provided by law?
<input type="radio"/> NATHAN HOCHMAN Party Preference: Republican General Counsel		<input type="radio"/> YES <input type="radio"/> NO

VOTE BOTH SIDES OF BALLOT



FOR ASSOCIATE JUSTICE, COURT OF APPEAL, THIRD DISTRICT	MEASURES SUBMITTED TO THE VOTERS	STATE
Shall Associate Justice LAURIE M. EARL be elected to the office for the term provided by law?	1 CONSTITUTIONAL RIGHT TO REPRODUCTIVE FREEDOM. LEGISLATIVE CONSTITUTIONAL AMENDMENT. Amends California Constitution to expressly include an individual's fundamental right to reproductive freedom, which includes the fundamental right to choose to have an abortion and the fundamental right to choose or refuse contraceptives. This amendment does not narrow or limit the existing rights to privacy and equal protection under the California Constitution. Fiscal Impact: No direct fiscal effect because reproductive rights already are protected by state law.	30 PROVIDES FUNDING FOR PROGRAMS TO REDUCE AIR POLLUTION AND PREVENT WILDFIRES BY INCREASING TAX ON PERSONAL INCOME OVER \$2 MILLION. INITIATIVE STATUTE. Allocates tax revenues to zero-emission vehicle purchase incentives, vehicle charging stations, and wildfire prevention. Fiscal Impact: Increased state tax revenue ranging from \$3.5 billion to \$5 billion annually, with the new funding used to support zero-emission vehicle programs and wildfire response and prevention activities.
<input type="radio"/> YES		<input type="radio"/> YES
<input type="radio"/> NO		<input type="radio"/> NO
FOR ASSOCIATE JUSTICE, COURT OF APPEAL, THIRD DISTRICT		
Shall Associate Justice HARRY HULL be elected to the office for the term provided by law?		
<input type="radio"/> YES		
<input type="radio"/> NO		
FOR ASSOCIATE JUSTICE, COURT OF APPEAL, THIRD DISTRICT		
Shall Associate Justice PETER KRAUSE be elected to the office for the term provided by law?	26 ALLOWS IN-PERSON ROULETTE, DICE GAMES, SPORTS WAGERING ON TRIBAL LANDS. INITIATIVE CONSTITUTIONAL AMENDMENT AND STATUTE. Also allows: sports wagering at certain horseracing tracks; private lawsuits to enforce certain gambling laws. Directs revenues to General Fund, problem-gambling programs, enforcement. Fiscal Impact: Increased state revenues, possibly reaching tens of millions of dollars annually. Some of these revenues would support increased state regulatory and enforcement costs that could reach the low tens of millions of dollars annually.	31 REFERENDUM ON 2020 LAW THAT WOULD PROHIBIT THE RETAIL SALE OF CERTAIN FLAVORED TOBACCO PRODUCTS. A "Yes" vote approves, and a "No" vote rejects, a 2020 law prohibiting retail sale of certain flavored tobacco products. Fiscal Impact: Decreased state tobacco tax revenues ranging from tens of millions of dollars annually to around \$100 million annually.
<input type="radio"/> YES		<input type="radio"/> YES
<input type="radio"/> NO		<input type="radio"/> NO
SCHOOL		
SUPERINTENDENT OF PUBLIC INSTRUCTION		
Vote for One		
<input type="radio"/> LANCE RAY CHRISTENSEN Education Policy Executive		
<input type="radio"/> TONY K. THURMOND Superintendent of Public Instruction		
<input type="radio"/> Write-in		
SHASTA-TEHAMA-TRINITY JOINT COMMUNITY COLLEGE DISTRICT	<input type="radio"/> YES	
	<input type="radio"/> NO	
Governing Board Member, Trustee Area F		
Vote for One		
<input type="radio"/> MICHELLE HICKOK Small Business Owner		
<input type="radio"/> BYRON HOTCHKISS Real Estate Developer		
<input type="radio"/> Write-in		
RED BLUFF JOINT UNION HIGH SCHOOL DISTRICT		
Governing Board Member		
Vote for no more than Three		
<input type="radio"/> BEKKI BULLERT Local Business Owner	<input type="radio"/> YES	
<input type="radio"/> KATIE MACKEY HARRIS Farmer	<input type="radio"/> NO	
<input type="radio"/> CHERYL A. FORBES Appointed Incumbent		
<input type="radio"/> BARBARA KLOTZ Registered Nurse		
<input type="radio"/> Write-in		
<input type="radio"/> Write-in		
<input type="radio"/> Write-in		
DISTRICT		
RIO ALTO WATER DISTRICT		
DIRECTOR		
Vote for no more than Two	<input type="radio"/> YES	
<input type="radio"/> GINNY MERCER Appointed Incumbent	<input type="radio"/> NO	
<input type="radio"/> CRAIG A WEAVER Incumbent		
<input type="radio"/> CLAY E. LOWREY		
<input type="radio"/> Write-in		
<input type="radio"/> Write-in		
	27 ALLOWS ONLINE AND MOBILE SPORTS WAGERING OUTSIDE TRIBAL LANDS. INITIATIVE CONSTITUTIONAL AMENDMENT AND STATUTE. Allows Indian tribes and affiliated businesses to operate online/mobile sports wagering outside tribal lands. Directs revenues to regulatory costs, homelessness programs, nonparticipating tribes. Fiscal Impact: Increased state revenues, possibly in the hundreds of millions of dollars but not likely to exceed \$500 million annually. Some revenues would support state regulatory costs, possibly reaching the mid-tens of millions of dollars annually.	
	28 PROVIDES ADDITIONAL FUNDING FOR ARTS AND MUSIC EDUCATION IN PUBLIC SCHOOLS. INITIATIVE STATUTE. Provides additional funding from state General Fund for arts and music education in all K-12 public schools (including charter schools). Fiscal Impact: Increased state costs of about \$1 billion annually, beginning next year, for arts education in public schools.	
	29 REQUIRES ON-SITE LICENSED MEDICAL PROFESSIONAL AT KIDNEY DIALYSIS CLINICS AND ESTABLISHES OTHER STATE REQUIREMENTS. INITIATIVE STATUTE. Requires physician, nurse practitioner, or physician assistant on site during treatment. Requires clinics to: disclose physicians' ownership interests; report infection data. Fiscal Impact: Increased state and local government costs likely in the tens of millions of dollars annually.	
	<input type="radio"/> YES	
	<input type="radio"/> NO	



VOTER'S GUIDE INFORMATION SECTION

The Following Pages Contain
Voter Information Applicable to your Ballot
Which May Include:

- CANDIDATES' STATEMENTS
- BALLOT MEASURES
- ANALYSIS
- ARGUMENT PRO & CON
- TEXT OF MEASURES

This guide section does not contain a complete list of candidates. A complete list of candidates appears on the Sample Ballot. Each candidate's statement in this guide is volunteered by the candidate and is printed at the expense of the candidate.

The text, grammar and spelling are as submitted by the authors or candidates.

PROPOSITION 34 – CAMPAIGN SPENDING LIMITS

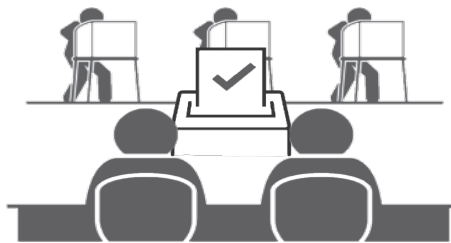
Among all state legislative candidates appearing on ballots in Tehama County, the following persons have pledged to abide by campaign spending limits as specified in the California Government Code. Candidates agreeing to the campaign spending limits also have the opportunity to publish a statement of qualifications in the local voter information guide.

State Assembly, 3rd District

JAMES GALLAGHER, Party Preference: Republican
DAVID LEON ZINK, Party Preference: Democratic

TRUSTEDINFO2022

Election officials are your trusted sources for election information



Less than a month until Election Day November 8, 2022! Make sure you've got the correct election information by checking your voter information at: <https://www.sos.ca.gov/elections/cavoter>

Election Day is Tuesday, November 8, 2022! Don't know where to start? Trusted election material is available at: <https://www.co.tehama.ca.us/government/departments/elections/>

#Trusted Info 2022 is more than a hashtag! We're ensuring you get the most up-to-date voting information at our secure election website: <https://www.co.tehama.ca.us/government/departments/elections/>



Top-Two Candidates Open Primary Act

Under the Top 2 Open Primary Act, approved by the voters in 2010, only the top two candidates who received the top number of votes in the primary election will appear on the General Election Ballot. Candidates from these offices may have the same political party preference. Also write-in candidates are no longer allowed for these contests at the General Election. For more information, please contact the Tehama County Elections Department at (530) 527-8190 or toll-free (866) 289-5307.

The voter-nominated offices that the Top 2 Open Primary Act applies to are: Governor; Lt. Governor; Secretary of State; Controller; Treasurer; Attorney General; Insurance Commissioner; Board of Equalization, District 1; U.S. Representative, District 1; State Senator, District 1; State Assembly, District 3

PARTY ENDORSEMENTS

Proposition 14, approved by the voters in 2010, authorizes political parties to endorse candidates to Voter-Nominated offices. This pamphlet contains the official endorsements that we received by the deadline and are printed as submitted.

The **American Independent Party** endorses the following candidate(s):

<u>Candidate Name</u>	<u>Party Preference</u>	<u>Office</u>
Brian Dahle	Republican	Governor
Robert Howell	Republican	Insurance Commissioner
Mark P. Meuser	Republican	United States Senate (Full Term)
Mark P. Meuser	Republican	United States Senate (Partial Term)
Doug LaMalfa	Republican	U.S. Representative, District 1

The **Democratic Party** endorses the following candidate(s):

<u>Candidate Name</u>	<u>Party Preference</u>	<u>Office</u>
Gavin Newsom	Democratic	Governor
Eleni Kounalakis	Democratic	Lieutenant Governor
Shirley N. Weber	Democratic	Secretary of State
Malia M. Cohen	Democratic	Controller
Fiona Ma	Democratic	Treasurer
Rob Bonta	Democratic	Attorney General
Ricardo Lara	Democratic	Insurance Commissioner
Jose S. Altamirano	Democratic	Board of Equalization, District 1
Alex Padilla	Democratic	United States Senate (Full Term)
Alex Padilla	Democratic	United States Senate (Partial Term)
Max Steiner	Democratic	U.S. Representative, District 1
David Leon Zink	Democratic	State Assembly, District 3

The **Republican Party** endorses the following candidate(s):

<u>Candidate Name</u>	<u>Party Preference</u>	<u>Office</u>
Brian Dahle	Republican	Governor
Angela E. Underwood Jacobs	Republican	Lieutenant Governor
Rob Bernosky	Republican	Secretary of State
Lanhee J. Chen	Republican	Controller
Jack M. Guerrero	Republican	Treasurer
Nathan Hochman	Republican	Attorney General
Robert Howell	Republican	Insurance Commissioner
Ted Gaines	Republican	Board of Equalization, District 1
Mark P. Meuser	Republican	United States Senate (Full Term)
Mark P. Meuser	Republican	United States Senate (Partial Term)
Doug LaMalfa	Republican	U.S. Representative, District 1
James Gallagher	Republican	State Assembly, District 3



<div><div>STATEMENT OF CANDIDATE FOR U.S. REPRESENTATIVE, 1ST DISTRICT</div><div><div>MAX J. STEINER</div><div>AGE: 36</div></div><div><p>Occupation: U.S. Army Reservist</p><p>Education and Qualifications: I am a combat veteran, a political moderate and a fifth-generation Californian. I am pro-choice, pro-gun, and pro-America. We need to make big changes in Washington. We need fewer career politicians. We need patriotic elected officials who will put principles over party. We need politicians who will stand up and say "no" to the political extremes of the far-left and the far-right. We need politicians who will truly put America first.</p><p>My legislative priorities as your Representative would cut across party lines:</p><ul style="list-style-type: none">protecting the fundamentals of our democracy by respecting the results of free and fair electionsreducing fire risk by thinning our forests, strengthening the timber industry, and using prescribed firehiring more firefighters and paying them betterbuilding more dams to reduce the impacts of climate changecodifying Roe v. Wade into law to protect reproductive privacy rightsensuring security abroad with a strong military and security at home with strong police forces<p>I am not a typical politician. At 19, I joined the Army and served two years in Iraq as an infantryman with the 10th Mountain Division. I am now a First Sergeant in the U.S. Army Reserves. I used my G.I. bill to attend U.C. Berkeley. I then served eight years as a U.S. diplomat, working on agriculture in Honduras, immigration in Mexico, and as a peacekeeper in Egypt.</p><p>I will put the needs of CD-1 first and my personal interests last.</p><p>I would be honored to earn your vote.</p><p>http://www.maxsteinerforcongress.com</p><p>s/ Max Steiner</p></div></div> <div><div>DECLARACIÓN DE CANDIDATO A REPRESENTANTE DE LOS ESTADOS UNIDOS, DISTRITO 1</div><div><div>MAX J. STEINER</div><div>EDAD: 36</div></div><div><p>Ocupación: Reservista del Ejército de los EE. UU.</p><p>Educación y calificaciones: Soy un veterano de combate, un político moderado y un californiano de quinta generación. Estoy a favor del derecho a elegir, a favor de las armas y a favor de Estados Unidos.</p><p>Necesitamos hacer grandes cambios en Washington. Necesitamos menos políticos profesionales. Necesitamos funcionarios patriotas electos que pongan los principios por encima de los partidos. Necesitamos políticos que se pongan de pie y digan "no" a los políticos de la extrema izquierda y la extrema derecha. Necesitamos políticos que realmente pongan a Estados Unidos en primer lugar.</p><p>Mis prioridades legislativas como su Representante traspasarán los límites de los partidos para:</p><ul style="list-style-type: none">proteger los fundamentos de nuestra democracia, respetando los resultados de las elecciones libres y justasreducir el riesgo de incendios mediante la poda de nuestros bosques, fortaleciendo a la industria maderera y realizando incendios controladoscontratar más bomberos con mejores sueldosconstruir más presas para reducir los impactos del cambio climáticocodificar el caso Roe vs. Wade en ley para proteger los derechos de privacidad reproductivagarantizar la seguridad en el extranjero con un ejército fuerte y la seguridad en casa con fuerzas policiales sólidas<p>No soy un político común. A los 19, me uní al Ejército y serví dos años en Iraq como miembro de infantería en la 10.a División de Montaña. Ahora soy Primer Sargento en la Reserva del Ejército de los EE. UU. Usé la ley G.I. para asistir a la Universidad de California en Berkeley. Después serví durante ocho años como diplomático de los EE. UU., trabajando en agricultura en Honduras, en inmigración en México y como fuerza de paz en Egipto.</p><p>Pondré las necesidades de CD-1 en primer lugar y mis intereses personales al último.</p><p>Sería un honor para mí ganarme su voto.</p><p>http://www.maxsteinerforcongress.com</p><p>f/ Max Steiner</p></div></div>	<div><div>STATEMENT OF CANDIDATE FOR U.S. REPRESENTATIVE, 1ST DISTRICT</div><div><div>DOUG LAMALFA</div></div><div><p>Occupation: Farmer/Member, United States of Representatives</p><p>Education and Qualifications: The challenges we face in Northern California keep growing. Tragic fires, drought, needless water shortages, record inflation, and a faltering economy. Life just seems harder for too many, especially retirees and young families. As your Congressman, I have fought for the North State; delivering billions in aid for disaster recovery, working to protect our water from being wasted by government mismanagement and worked to federally authorize and fund the construction of Sites reservoir. I'm the leading voice on changing federal forest policy, so we can get back to responsibly thinning our overgrown forests and reduce the risk of major fires. I have fought against the inflation-causing overspending in Washington DC and to return our nation to common sense. I voted against the bloated budgets and extreme policies that have hurt so many. I've always stood up firmly for securing our border and completing the wall as national security is a top priority. I have consistently worked for American energy independence, including domestic oil and natural gas as well as renewables such as biomass power and clean, cheap hydroelectric. I've voted to keep our military strong and ensure our veterans get the care they've earned.</p><p>It is a privilege to serve you and to be your voice. Know that I will keep fighting to protect your individual rights and personal liberty. I'd be honored to receive your vote. Thank you.</p><p>www.DougLaMalfa.com or call 530-712-3675</p><p>s/ Doug LaMalfa</p></div></div>
--	--



<div>STATEMENT OF CANDIDATE FOR STATE ASSEMBLY, 3RD DISTRICT</div> <div>DAVID LEON ZINKAGE: 62</div> <div>Occupation: Consultant and Community Organizer</div> <div>Education and Qualifications: I'm a community leader on the Paradise Ridge, a fourth generation native of Butte County with a deeply rooted faith that moves me to respect my fellow citizens and to bring us together to work toward real results.</div> <div>I was raised in Oroville, earned a B.A. in both Religious Studies and Music from CSU Chico, and as a self-employed business consultant have helped raise millions of dollars for nonprofits.</div> <div>Megafires in 2018 and 2020 took the home my father was born in, the home he built, and my family's home in Magalia. Since then I have answered the call to help our tried-and-tested communities recover.</div> <div>Another fire of bitter partisan politics is eating away at the cornerstone of our social contract: We the People – the belief that through respect for both the individual and the community we can order our own affairs.</div> <div>No political Party has all the answers. We the People do. Our disagreements are meant to kick out bad ideas. If we keep faith together we are brilliant.</div> <div>I believe the solutions we need can only be found by listening carefully to the people of our District. I've built a career on listening. A sincere fight on the issues I see as a good thing, and lean in with respect and curiosity for solutions. This is the key to finding the right ideas for effective action.</div> <div>If this style of leadership matters to you, I humbly ask for your vote on November 8th.</div> <div>https://zinkforassembly.com/</div> <div>s/ David Leon Zink</div>	<div>DECLARACIÓN DE CANDIDATO A ASAMBLEA ESTATAL, DISTRITO 3</div> <div>DAVID LEON ZINKEDAD: 62</div> <div>Ocupación: Consultor y Organizador Comunitario</div> <div>Educación y calificaciones: Soy un líder de la comunidad de Paradise Ridge, nativo de cuarta generación del Condado de Butte con una fe profundamente arraigada que me motiva a respetar a mis compatriotas y a unirnos para trabajar por resultados reales.</div> <div>Crecí en Oroville, obtuve dos licenciaturas en Estudios Religiosos y Música de la Universidad Estatal de California (CSU) en Chico, y como consultor empresarial independiente ayudé a recaudar millones de dólares para organizaciones sin fines de lucro.</div> <div>Los megaincendios de 2018 y 2020 se llevaron la casa donde nació mi padre, el hogar que construyó, y el hogar de mi familia en Magalia. Desde entonces he respondido a los llamados para ayudar a la recuperación de nuestras exhaustas comunidades.</div> <div>Otra hoguera de la amarga política partidista está carcomiendo la piedra angular de nuestro contrato social: Nosotros, el Pueblo, la creencia de que mediante el respeto a las personas y a la comunidad podemos ordenar nuestros propios asuntos.</div> <div>Ningún partido político tiene todas las respuestas. Nosotros, el Pueblo, sí. Nuestros desacuerdos sirven para expulsar las malas ideas. Si mantenemos la fe juntos brillaremos.</div> <div>Creo que las soluciones que necesitamos solo pueden encontrarse si escuchamos atentamente a la gente de nuestro distrito. Construí una carrera escuchando. Una lucha sincera por los asuntos que veo como algo bueno, e inclinarse con respeto y curiosidad por las soluciones. Esta es la clave para encontrar las ideas adecuadas para una acción eficaz.</div> <div>Si le interesa este tipo de liderazgo, humildemente le pido su voto el 8 de noviembre.</div> <div>https://zinkforassembly.com/</div> <div>f/ David Leon Zink</div>



**STATEMENT OF CANDIDATE FOR
RED BLUFF JOINT UNION HIGH SCHOOL DISTRICT**

KATIE MACKEY HARRIS

AGE: 45

Occupation: Farmer

Education and Qualifications: I am a third generation Spartan. I graduated from RBHS in 1995, then went on to earn a scholarship to play softball at the University of Oregon where I lettered all four years, received MVP and All Pac-10 honors as well as earned a bachelor's degree in English Literature. I have worked in education at RBUHSD and coached basketball and softball for over 20 seasons. I now work in private industry as the President and General Manager for Mt. Lassen Trout Farm and as the Managing Partner for Mt. Lassen Seafood. I have lived in and around Red Bluff most of my life and am committed to this community. I serve on the board for the Tehama County Farm Bureau as well as the Lassen Park Foundation. I believe I would bring a unique perspective to the RBHSD school board. Having worked both in education and now as an employer in private industry, I see the direct result of folks who graduate from high school or beyond with an understanding of commitment, hard work and a positive attitude. I plan to bring all three of these traits to the school board if elected.

s/ Katie Mackey Harris





Language assistance

The following election materials will be translated in Spanish and available at all polling places:

- A copy of the ballot
- Voting Instructions
- State Voter Guide
- Voter Bill of Rights

All Tehama County polling places provide a Spanish facsimile ballot. A list of polling places and their locations can be found at <https://www.co.tehama.ca.us/government/departments/elections/>

Los siguientes materiales electorales se traducirán al español y estarán disponibles en todos los lugares de votación:

- una copia de la boleta electoral
- las instrucciones para votar
- la Guía estatal para votantes
- la Declaración de Derechos de los Votantes

Todos los lugares de votación del condado de Tehama proporcionan un facsímil de la boleta en español. Se puede encontrar una lista de los lugares de votación y sus ubicaciones en

<https://www.co.tehama.ca.us/government/departments/elections/>

Requesting a facsimile ballot

You may request a Spanish facsimile ballot be mailed or emailed to you by contacting the elections office via mail, telephone, or email.

Cómo solicitar una boleta facsímil

Usted puede solicitar que se le envíe una boleta facsímil en español por correo postal o por correo electrónico si se comunica con la Oficina de Elecciones por correo postal, teléfono o correo electrónico.

Voting assistance

As a voter, you may bring up to two individuals with you to your polling place to help you cast your ballot, as long as those individuals do not represent your employer or your union. Your polling place will have copies of the ballot in Spanish and may have poll workers ready to assist you who speak this language.

Asistencia para votar

Como votante, usted puede ir al lugar de votación acompañado por hasta dos personas para que le ayuden a emitir su boleta, siempre y cuando esas personas no representen ni a su empleador ni a su sindicato. Su lugar de votación tendrá copias de las boletas electorales en español y es posible que haya trabajadores electorales listos para ayudarle que hablen este idioma.


Background

California law requires the Secretary of State in January before the primary election for Governor to identify which precincts have 3% or more of the voting-age residents who are members of a single language minority and lack sufficient skills in English to vote without assistance.

For more information in English, please contact the elections office:

 elections@co.tehama.ca.us

 530-527-8190 or Toll Free: 866-289-5307

 530-527-1140



Accessible voting

At the polling place



To check polling place accessibility, look for the wheelchair symbol on the back cover of this pamphlet. If your site is accessible, below the symbol you will find the word YES.

In some polling places, temporary thresholds, ramps, signage, cones, and door props, are used to improve access to the facility.

Curbside voting

If your polling place is not accessible, you may vote on a paper ballot from a nearby accessible location, including a car. A poll worker will qualify you to vote and return the voted ballot to the polling place. Some polling locations have a call button that rings inside the polling place.

Accessible voting system

Each polling place in the county has an electronic accessible voting machine with:

- an audio option that reads the ballot to you
- a universal plug for personal assistance device
- large print (24 points)

Ballot delivery to your home

You may request a vote by mail ballot by calling our office, or you may have a designated person pick up and deliver a vote by mail ballot from our office. Please call our office for details.

Voting information

Audio versions of the information about state candidates and/or measures and local candidates and/or measures are available upon request. The recordings are available approximately four weeks before the election.

How to request assistance

To request any of these options for assistance with accessible voting:
Phone Tehama County: 530-527-8190 or toll free 866-289-5307

Disability Rights of California will operate a statewide Election Day hotline
7am to 8pm on Election Day: November 8, 2022
1-888-569-7955

You can now vote from home on a computer or smart phone using Remote Accessible Vote By Mail (RAVBM). RAVBM allows you to mark your ballot electronically then print it and submit it by fax: 530-527-1140 or by mail to P.O. Box 250 Red Bluff, CA 96080. Call our office for more information or go online to <https://www.co.tehama.ca.us/government/departments/elections/>





Be a poll worker!



Fill out the form, scan and Email to: **elections@co.tehama.ca.us**

Or Mail it to:

Tehama County Elections Department

PO Box 250

Red Bluff, CA 96080

Or call us at 530-527-8190

Serve your community and make some extra money!

You can earn:

- \$118 as a Clerk
- \$133 as an Inspectors
- Plus \$20 to \$40 for training

We need poll workers to serve in the polls for the November 8, 2022 Election.

To qualify as a Poll Worker you must be either:

- a registered California voter,
- an exempt county worker,
- a lawful permanent resident of the United States, or
 - a student in good standing attending a public or private secondary education institution, who is at least 16 years old at the time of the election. A separate application is required and can be found online at <https://www.co.tehama.ca.us/government/departments/elections/>

I want to be a poll worker!

(check all that apply)

☐ I can work Tuesday, November 8, 2022

☐ I have my own transportation.

☐ I am fluent in English.

☐ I am willing to travel to serve outside my neighborhood.

☐ I am also fluent in: _____

Voter Information

Name: _____

Address where I live: _____

Phone: _____

Email: _____

Signature: _____

Date: _____



Sign up to track your ballot

Where's my ballot?

The Tehama County Election's office is now offering voters a new way to track and receive notifications on the status of their vote-by-mail ballot. Sign-up at [WheresMyBallot.sos.ca.gov](https://wheresmyballot.sos.ca.gov) to receive automatic email, SMS (text), or voice call notifications about your ballot.



VOTE SAFER with Your Vote-By-Mail Ballot

Voting by mail is **SAFE** and **EASY**.

After marking your choices on your ballot, simply:



Seal it.

Secure your ballot inside the envelope from your county elections office.



Sign it.

Make sure the **signature on your ballot envelope matches** the one on your CA driver license / state ID, or the one you provided when registering. Your county elections office will compare them to protect your vote.



Return it.

By mail - Make sure your ballot is postmarked by **November 8, 2022**.

No stamp required!

OR

In person - Drop your ballot off at a secure drop box, polling place, or county elections office by **8pm on November 8, 2022**.



Track it.

You can sign up at wheresmyballot.sos.ca.gov for alerts by text (SMS), email, or voice call on the status of your vote-by-mail ballot.

Facts about voting by mail in Tehama County

All Tehama County voters will receive a vote-by-mail ballot for the **November 8, 2022** election. Your county elections office will begin mailing ballots beginning **October 10, 2022**.

- Postage is pre-paid on all mailed ballots.
- All signatures are compared to the signature on your voter registration card.
- If the signature doesn't match, you will be contacted and be given an opportunity to correct the issue.
- You do not have to vote on all contests. Those you do vote on will still count.
- All mailed ballots are counted, regardless if the contest is close.
- If you make a mistake, you can ask for a replacement ballot.

For information about voting in Tehama County, please visit our website at <https://www.co.tehama.ca.us/government/departments/elections> or call 530-527-8190.





Signing Your Envelope

Your signature is an important part of the voting process. It is part of the security of the election. The signature on the back of each return ballot envelope is compared to the signature on file for that voter. Below are some important facts about your signature and voting.

The return envelope for your ballot must be signed.

We must compare the signature on the ballot envelope to the signature we have on file with your voter registration, before we count your ballot.

What if I forget to sign the envelope or my signature doesn't match?

If we receive your ballot envelope and the signature is missing or doesn't compare to what we have on file, we will contact you using the information we have on your voter record. You will be asked to visit our office and provide a signature or sign and return the form we mail to you, before your ballot can be counted.

How long does a voter have to fix their challenged signature?

Challenged signatures must be resolved with the elections office no later than 5pm two days prior to the certification of the election.

What if my signature changes?

Our signatures naturally change as time goes by. Some changes are more drastic than others. If you are aware of your signature changing, you can complete the signature update form contained in this guide and return it to us. Or contact our office and we will assist you in updating your signature on file.

Keep your signature up to date.

Make sure your address and signature are always up to date with the Elections Office. This will insure a smooth voting process for you during each election.



WARNING: ELECTIONEERING PROHIBITED!

VIOLATIONS CAN LEAD TO FINES AND/OR IMPRISONMENT.

WHERE:

- Within the immediate vicinity of a person in line to cast their ballot or within 100 feet of the entrance of a polling place, curbside voting or drop box the following activities are prohibited.

WHAT ACTIVITIES ARE PROHIBITED:

- *DO NOT* ask a person to vote for or against any candidate or ballot measure.
- *DO NOT* display a candidate's name, image, or logo.
- *DO NOT* block access to or loiter near any ballot drop boxes.
- *DO NOT* provide any material or audible information for or against any candidate or ballot measure near any polling place, vote center, or ballot drop box.
- *DO NOT* circulate any petitions, including for initiatives, referenda, recall, or candidate nominations.
- *DO NOT* distribute, display, or wear any clothing (hats, shirts, signs, buttons, stickers) that include a candidate's name, image, logo, and/or support or oppose any candidate or ballot measure.
- *DO NOT* display information or speak to a voter about the voter's eligibility to vote.

The electioneering prohibitions summarized above are set forth in Article 7 of Chapter 4 of Division 18 of the California Elections Code.

ADVERTENCIA: ¡ESTÁ PROHIBIDO HACER CAMPAÑA ELECTORAL!

LAS INFRACCIONES PUEDEN RESULTAR EN MULTA O PRISIÓN.

¿DÓNDE?:

- Muy cerca de una persona que está en la cola esperando para emitir su voto o a 100 pies (30 metros) de la entrada de un lugar de votación, de una votación en la acera o un buzón, las siguientes actividades están prohibidas.

LAS SIGUIENTES ACTIVIDADES ESTÁN PROHIBIDAS:

- *NO* le pida a una persona que vote a favor o en contra de algún candidato o medida electoral.
- *NO* muestre el nombre, la imagen ni el logo de un candidato.
- *NO* bloquee el acceso a ninguna urna electoral ni merodee cerca de ellas.
- *NO* ofrezca ninguna información material o acústica que esté a favor o en contra de algún candidato o medida electoral cerca de un lugar de votación, centro de votación o urna electoral.
- *NO* haga circular ninguna petición, como para iniciativas, referendos, revocaciones o nominaciones de candidatos.
- *NO* distribuya, muestre ni use ropa (sombreros, remeras, carteles, insignias, calcomanías) que incluya el nombre, la imagen o el logo de un candidato, o apoye o se oponga a un candidato o medida electoral.
- *NO* muestre información ni hable con un elector sobre la elegibilidad de su elegibilidad para votar.

Las prohibiciones de la campaña electoral resumidas anteriormente figuran en el capítulo 7 del capítulo 4 de la división 18 del Código electoral de California.



VOTER BILL *of* RIGHTS



YOU HAVE THE FOLLOWING RIGHTS



1. **The right to vote if you are a registered voter.** You are eligible to vote if you are:

- ★ a U.S. citizen living in California
- ★ at least 18 years old
- ★ registered where you currently live
- ★ Not currently serving a state or federal prison term for the conviction of a felony, and
- ★ not currently found mentally incompetent to vote by a court

2. **The right to vote if you are a registered voter even if your name is not on the list.**

You will vote using a provisional ballot. Your vote will be counted if elections officials determine that you are eligible to vote.

3. **The right to vote if you are still in line when the polls close.**

4. **The right to cast a secret ballot** without anyone bothering you or telling you how to vote.

5. **The right to get a new ballot if you have made a mistake,** if you have not already cast your ballot. You can:

Ask an elections official at a polling place for a new ballot,
Exchange your vote-by-mail ballot for a new one at an elections office, or at your polling place, or
Vote using a provisional ballot.

6. **The right to get help casting your ballot** from anyone you choose, except from your employer or union representative.

7. **The right to drop off your completed vote-by-mail ballot at any polling place** in California.

8. **The right to get election materials in a language other than English** if enough people in your voting precinct speak that language.

9. **The right to ask questions to elections officials about election procedures** and watch the election process. If the person you ask cannot answer your questions, they must send you to the right person for an answer. If you are disruptive, they can stop answering you.

10. **The right to report any illegal or fraudulent election activity** to an elections official or the Secretary of State's office.

SPECIAL NOTICE

- Polls are open from 7:00 a.m. to 8:00 p.m. on the day indicated in the posted county Voter Information Guide.
- Specific instructions on how to vote, including how to cast a provisional ballot, can be obtained from a poll worker or by reading the information mailed to you by your local elections official.
- If you are a newly registered voter, you may be asked to provide appropriate identification or other documentation according to federal law. But please note that every individual has the right to cast a provisional ballot even if he or she does not provide the documentation.
- It is against the law to represent yourself as being eligible to vote unless you meet all of the requirements to vote under federal and state law.
- It is against the law to tamper with voting equipment.

If you believe you have been denied any of these rights, call the Secretary of State's confidential toll-free Voter Hotline at (800) 345-VOTE (8683).



On the web at www.sos.ca.gov



By phone at (800) 345-VOTE (8683)



By email at elections@sos.ca.gov



TEHAMA COUNTY POLLING LOCATIONS FOR ELECTION DAY

All polling locations will be open on Tuesday, November 8, 2022 from 7:00 am to 8:00 pm.

BOWMAN COMMUNITY CHURCH, 18335 BOWMAN RD.
BEND FIRE STATION, 22310 BEND FERRY RD.
RED BLUFF COMMUNITY CENTER, 1500 S JACKSON ST.
FAIRGROUNDS TEHAMA ROOM, 650 ANTELOPE BLVD
SACRED HEART PARISH HALL, 2355 MONROE ST.
DEPARTMENT OF EDUCATION, 1135 LINCOLN ST.
EL CAMINO METHODIST CHURCH, 8345 HWY 99W
CORNING CITY HALL, 794 3RD ST.
MT OLIVE LUTHERAN CHURCH, 341 SOLANO ST.
CORNING VETERANS HALL, 1620 SOLANO ST.
LOS MOLINOS VETERANS HALL, 7980 SHERWOOD BLVD.
CHRIST COMMUNITY CHURCH VINA, 26370 5TH ST.

LAKE CALIFORNIA LAKE CLUB, 22431 RIO ALTO DR.
RIDGEWAY PARK, 19725 RIDGE RD.
DIBBLE CREEK FIRE STATION, 20230 HWY 36W
RED BLUFF MOOSE LODGE, 11745 HWY 99W
TEHAMA COUNTY ADMINISTRATION, 727 OAK ST.
UNITED METHODIST CHURCH, 525 DAVID AVE.
GERBER BIBLE FELLOWSHIP, 301 SAMSON AVE.
FIRST BAPTIST CHURCH, 506 COLUSA ST.
RANCHO TEHAMA REC HALL, 17605 PARK TERRACE
CONE METHODIST CHURCH, 11220 HWY 99E
MILL CREEK BAPTIST CHURCH, 25145 TAFT ST.
CAPAY JT. ELEM. SCHOOL, 7504 CUTTING AVE.

CHURCH OF JESUS CHRIST OF LATTER-DAY SAINTS, 545 BERRENDOS AVE.

TRINITY LANDMARK MISSIONARY BAPTIST CHURCH, 20920 HAMPTON RHODES DR.

TEHAMA COUNTY VOTE-BY-MAIL BALLOT DROP-OFF LOCATIONS

IMPORTANT: Hours listed for each drop box are the business hours for the facility at the time of printing. These Drop Boxes are maintained by the Elections Office and ballots will be retrieved at regular intervals throughout the dates listed below. **ALL** Drop Boxes will be locked and/or removed at 8:00PM on November 8, 2022.

October 10th thru November 8th

- | | | |
|-------------------------------------|----------------------------------|--|
| • Inside - Corning City Hall | 794 Third Street, Corning | Hours: 8:00AM - 5:00PM
Monday thru Friday |
| • Inside - NuWay Market | 8049 Hwy 99E, Los Molinos | Hours 7:00AM - 8:00PM
Daily |
| • Inside – Tehama County Library | 545 Diamond Ave., Red Bluff | Hours 1:00PM - 7:00PM
Monday thru Friday |
| • Inside – Food Maxx | 94 Belle Mill Rd., Red Bluff | Hours 6:00AM - 12:00AM
Daily |
| • Inside– Historic Courthouse Lobby | 633 Washington St., Red Bluff | Hours 8:00AM - 5:00PM
Monday thru Friday |
| • Outside - Madison & Pine St. | Corner of Madison & Pine St., RB | 24 Hours a day |





PROTECT YOUR RIGHTS
VOTE

FLAG



Tehama County Elections Department
PO Box 250
Red Bluff, CA 96080-0250

ELECTRONIC SERVICE REQUESTED



NONPROFIT
U.S. POSTAGE
PAID
PRODOCUMENTSOLUTIONS

Ballot Type

POSTMASTER
DELIVER TO:

TEHAMA COUNTY

FOR THE NOVEMBER 8, 2022, CONSOLIDATED GENERAL ELECTION
EVERY VOTER WILL RECEIVE A BALLOT IN THE MAIL

Please note that you will receive an official Vote-by-Mail ballot in the mail shortly.
We encourage you to vote the ballot you receive, however your polling place for
the November 8, 2022 Consolidated General Election is below.



POLLS OPEN AT 7 A.M. AND CLOSE AT 8 P.M.

Your polling place may have changed. Visit: <https://www.co.tehama.ca.us/government/departments/elections>

