



1760 Walnut Street, Red Bluff, CA
1953—2014



What a difference a year makes...



1834 Walnut Street, Red Bluff, CA

2014 Tehama County Crop Report



About the cover: The Tehama County Department of Agriculture moved into the new Agricultural Center located at 1834 Walnut Street on February 5, 2015. The Department had previously been located at 1760 Walnut Street since 1953. The Agricultural Center is also occupied by the Tehama County Air Pollution Control District. The project's cost totaled approximately \$1.96 million.

While a modern, larger building has been needed for some time by the Department of Agriculture, the Agricultural Center was ultimately a result of the Administrative Office of the Courts purchasing the 1760 Walnut Street property to construct a primary court facility for the Superior Court of Tehama County.

WITH MUCH GRATITUDE AND APPRECIATION
WE DEDICATE THE
2014 TEHAMA COUNTY CROP REPORT TO
DOUG COMPTON

After faithfully serving the Tehama County Department of Agriculture, Tehama County residents and especially the local agricultural community for 31 years; Doug Compton has retired as the Assistant Agricultural Commissioner/Sealer of Weights & Measures. He has held this position since being appointed in 1997.

Doug began his career with the Tehama County Department of Agriculture as an Agricultural Biologist/Weights & Measures Specialist I in 1984. He was promoted to an Agricultural Biologist/Weights & Measures Specialist II in 1986, an Agricultural Biologist/Weights & Measures Specialist III in 1988 and Deputy Agricultural Commissioner/Sealer of Weights & Measures in 1990.

Doug initiated several projects to benefit local agriculture that impacted both the local and state agriculture community. He worked tirelessly before and after normal office hours and on weekends on a routine basis. His rare quality work ethic and high standard of dedication to the Department of Agriculture will probably never be equaled.

Whenever possible, Doug was rightfully proud to proclaim, that "Tehama County growers produce some the safest and most wholesome food in the world".

Doug's contributions to the Tehama County Department of Agriculture will be appreciated well into the future. His good nature, sense of humor and encyclopedic knowledge on just about everything will be missed!

Thank you Doug for 31 years of service to Tehama County!



WEIGHTS-MEASURES time. Doug Compton of the Department of Agriculture Weights and Measures Department in the county checks the scales at New Year's Market.

TABLE OF CONTENTS

Dedication Page.....	3
Commissioner Letter	5
Board of Directors & Staff Listing.....	6
Fruit & Nut Totals.....	7
Nursery Products.....	8
Livestock & Poultry	8
Vegetable Crops.....	9
Timber Products	9
Livestock & Poultry Products	9
Pasture & Range	10
Apiary Production	10
Seed Crops	10
Field Crops	11
Comparison Summary.....	12
Sustainable Ag Report.....	13
A Glimpse into the Past	14
Tehama County Exports.....	15

TEHAMA COUNTY DEPARTMENT OF AGRICULTURE/WEIGHTS & MEASURES

Karen Ross, Secretary
California Department of Food and Agriculture
and
The Honorable Board of Supervisors of Tehama County

It is my pleasure to present the 2014 Tehama County Crop Report that is prepared pursuant to the provisions of Section 2279 of the California Food and Agricultural Code. This annual report provides a statistical description of Tehama County's agricultural production. All figures in the report represent gross returns only and do not reflect net income of producers.

The total gross value of Tehama County agricultural production in 2014 was \$380,340,300 which represents a 25.9% increase from 2013 values and a sixth consecutive record year.

Walnuts are the leading crop in Tehama County, increasing 37.5% in value due to acreage and production increases. They accounted for 44.5% (\$169,375,600) of the total crop value. Almonds remain the number two commodity and increased 14.6% due to price and slight acreage increases resulting in a total crop value of \$48,216,400. Table olive values rebounded from last year's production decrease attributed to weather and drought conditions, posting a 117.2% increase in value.

Other noteworthy changes in 2014 include rangeland's substantial 100.0% increase in total value. Even though drought conditions continue, late winter and spring rains were sufficient to meet the grasses precipitation requirements. Beef cattle values improved significantly, posting a 54.5% increase in value due to record market prices. Milk values also increased 23.2% as a result of price increases.

My sincere appreciation is extended to the growers, processors, government agencies, and others that provided information used in preparing this report, as this publication would not be possible without their combined efforts.

I wish to thank my staff that assisted in compiling this report with special recognition to Marcie Skelton and Lisa Mann for the report's overall coordination and production.

Respectfully Submitted,


Rick Gurrola
Agricultural Commissioner

TEHAMA COUNTY BOARD OF SUPERVISORS

Steve Chamblin	Supervisor - District 1
Candy Carlson	Supervisor - District 2
Dennis Garton	Supervisor - District 3
Bob Williams	Supervisor - District 4, Vice-Chair
Burt Bundy	Supervisor - District 5, Chairman

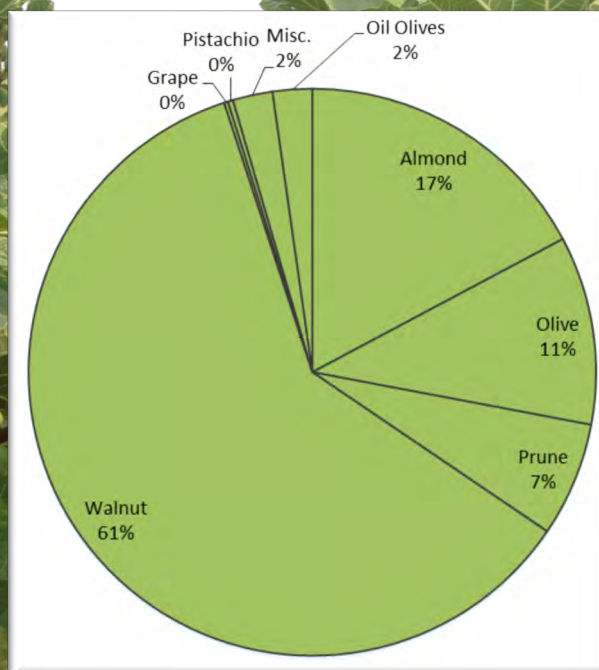
DEPARTMENT OF AGRICULTURE/ WEIGHTS & MEASURES

Rick Gurrola	Agricultural Commissioner/Sealer of Weights & Measures
Douglas Compton	Assistant Agricultural Commissioner/Sealer of Weights & Measures
Doni Rulofson	Deputy Agricultural Commissioner/Sealer of Weights & Measures
David Stoffel	Agricultural Biologist/Weights & Measures Specialist
Ryan Jennings	Agricultural Biologist/Weights & Measures Specialist
Marcie Skelton	Agricultural Biologist/Weights & Measures Specialist
Mike Bowles	Agricultural Biologist/Weights & Measures Specialist
Loren Gehrung	Agricultural Biologist/Weights & Measures Specialist
Juan Rodriguez	Agricultural/Weights & Measures Aide
Richard Borchard	Agricultural/Weights & Measures Aide
Vanessa Sciarretta	Office Manager
Lisa Mann	Office Assistant III

FRUIT & NUT CROPS

	Year	Bearing Acreage	Production/ Acre (tons)	Total Tons	Value/ Ton	Total Value
Almond (meats)	2014	10,749	0.78	8,384	\$5,751	\$48,216,400
	2013	10,313	0.77	7,941	\$5,300	\$42,087,300
Olive, Table	2014	5,977	5.10	30,483	\$988	\$30,117,200
	2013	6,163	2.50	15,408	\$900	\$13,867,200
Olive, Oil	2014	3,853	2.94	11,328	\$556	\$6,298,400
	2013	3,325	4.60	15,295	\$580	\$8,871,100
Prune	2014	6,343	1.11	7,041	\$2,592	\$18,250,300
	2013	6,559	1.91	12,528	\$1,600	\$20,044,800
Walnut	2014	24,560	2.10	51,576	\$3,284	\$169,375,600
	2013	21,304	1.70	36,217	\$3,400	\$123,137,800
Grape	2014	121	6.40	774	\$ 793	\$613,800
	2013	104	4.60	478	\$1,162	\$555,400
Pistachio	2014	226	0.64	145	\$5,691	\$ 825,200
	2013	175	1.80	315	\$5,145	\$1,620,700
Misc.*	2014					\$6,353,800
	2013					\$5,424,300
				Total	2014 2013	\$280,050,700 \$215,608,600

* Misc: Pecans, Figs, Peaches, Black Walnuts, Almond Hulls, Cherries, Blueberries, Nectarines, Apricots, Apples, Walnut Shells, Oranges, Plums, Pears, Pomegranates, & Persimmons



NURSERY PRODUCTS

	Year	Total Value
Nursery*	2014	\$ 9,779,100
	2013**	\$11,083,000

*Includes: Orchard & Christmas Trees, Berry & Bedding Plants

**Value Updates From Last Year's Published Total

LIVESTOCK & POULTRY

	Year	Number of Head Sold	Total Live Weight	Unit	Value/ Unit	Total Value
Calves	2014	4,896	26,879	cwt.	\$254	\$6,827,300
	2013	4,692	25,759	cwt.	\$162	\$4,173,000
Feeders	2014	11,424	79,968	cwt.	\$202	\$16,153,500
	2013	10,948	76,636	cwt.	\$131	\$10,039,300
Feedlot	2014	19,200	38,400	cwt.	\$187	\$7,180,800
	2013	18,400	36,800	cwt.	\$130	\$4,784,000
Cows & Bulls	2014	3,072	40,512	cwt.	\$91	\$3,686,600
	2013	2,944	38,824	cwt.	\$75	\$2,911,800
Dairy Cattle	2014					\$3,335,800
	2013					\$3,087,200
Sheep & Lambs	2014	4,750	4,750	cwt.	\$143	\$679,300
	2013	4,750	4,750	cwt.	\$109	\$517,800
Hogs & Pigs	2014	1,000	1,750	cwt.	\$82	\$143,500
	2013	1,000	1,750	cwt.	\$71	\$124,300
Misc. Livestock*	2014					\$2,688,000
	2013					\$2,715,600
Total					2014	\$40,694,800
					2013	\$28,353,000

*Misc: Aquaculture, Meat Goats, Poultry, Rabbits, & Misc. Fowl

VEGETABLE CROPS

	Year	Acres	Total Value
Misc. Vegetables*	2014	150	\$350,000
	2013	150	\$350,000

*Direct Sales, Farmers' Market, & Road Side Stands

TIMBER PRODUCTS

	Year	Harvested Board Feet	Total Value
	2014	48,570,000	\$10,406,000
	2013	92,774,000	\$12,287,100

LIVESTOCK & POULTRY PRODUCTS

	Year	Production	Unit	Value/Unit	Total Value
Milk (Market)	2014	705,031	cwt.	\$23.29	\$16,420,200
	2013	717,312	cwt.	\$19.17	\$13,750,900
Milk (Mfg.)	2014	57,325	cwt.	\$23.32	\$1,336,800
	2013	34,576	cwt.	\$19.06	\$659,000
Animal Fiber*	2014				\$68,500
	2013				\$68,500
Misc.**	2014				\$522,000
	2013				\$222,000
Total				2014	\$18,347,500
				2013	\$14,700,400

* Animal Fiber: Includes Wool & Alpaca Fiber

** Misc: Includes Eggs & Other Dairy Products

PASTURE & RANGE

	Year	Harvest Acres	Value/Acre	Total Value
Irrigated	2014	22,000	\$180	\$3,960,000
	2013	22,000	\$144	\$3,168,000
Range	2014	922,500	\$10	\$9,225,000
	2013	922,500	\$5	\$4,612,500
Stubble*	2014	5,478	\$7	\$38,300
	2013	6,322	\$7	\$44,300
Total		2014	\$13,223,300	
		2013	\$7,824,800	

*Includes Rice, Sudan, Barley & Wheat Acreages

APIARY PRODUCTS

	Year	Production (colonies)	Value/Colony	Total Value
Pollination	2014	21,498	\$156	\$3,353,700
	2013	20,626	\$178	\$3,671,400
Apiary* Products	2014			\$4,078,200
	2013			\$5,899,300
Total		2014	\$7,431,900	
		2013	\$9,570,700	

*Apiary Products: Honey, Queens, Wax, & Package Bees

SEED CROPS

	Year	Harvested Acreage	Total Value
Misc.	2014*	1407	\$1,539,700
	2013**	352	\$ 489,100

*2014: Kohlrabi, Sunflower, Pumpkin, Watermelon, Beans,
Includes Certified & Uncertified Seeds

**2013: Sunflowers (Certified Seeds Only)

FIELD CROPS

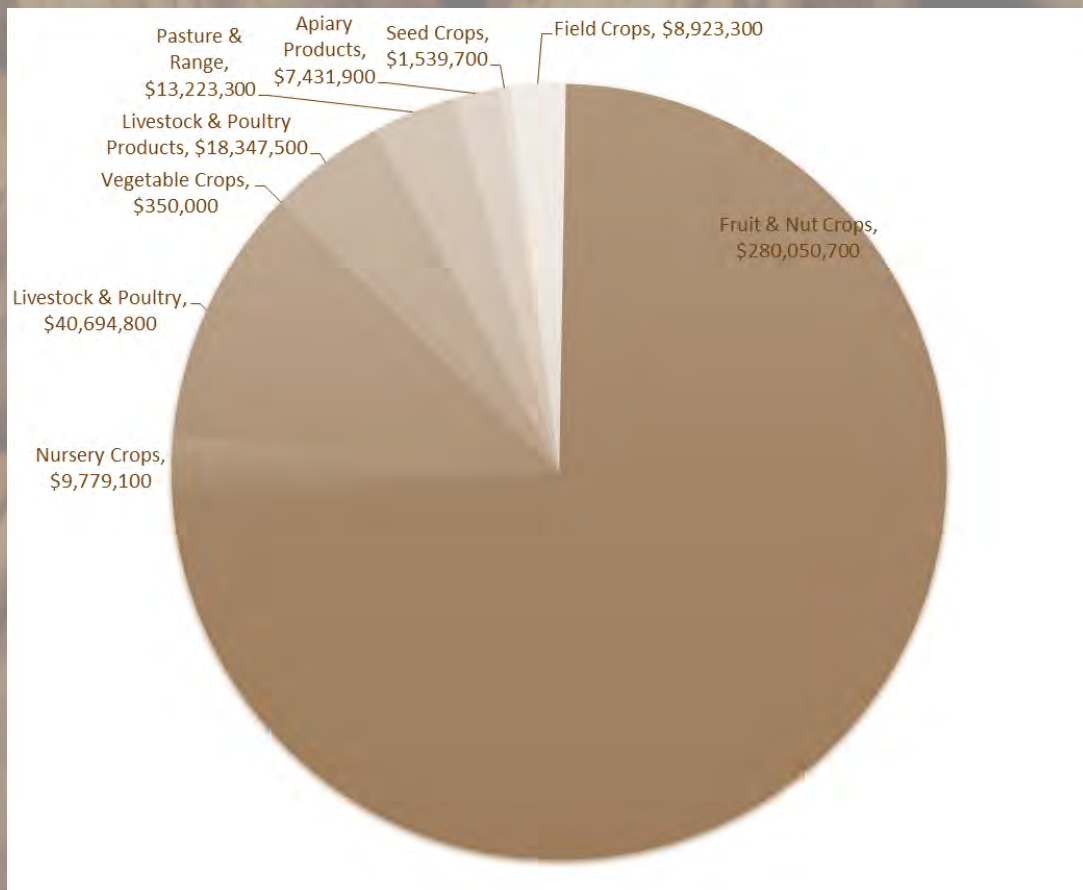
	Year	Harvested Acreage	Production/ Acre (tons)	Total Tons	Value/ Ton	Total Value
Wheat	2014	2,610	2.29	5,977	\$232	\$1,386,700
	2013	3,109	2.80	8,705	\$231	\$2,010,900
Corn	2014	882	5.60	4,939	\$144	\$ 711,200
	2013	1,761	5.98	10,531	\$192	\$2,022,000
Alfalfa, hay	2014	1,184	6.60	7,814	\$239	\$1,867,500
	2013	2,198	7.60	16,705	\$210	\$3,508,100
Grain, hay (Oats)	2014	3,489	1.10	3,838	\$212	\$ 813,700
	2013	4,178	2.80	11,698	\$146	\$1,707,900
Hay, other	2014	2,158	2.34	5,050	\$220	\$1,111,000
	2013	2,480	3.70	9,176	\$147	\$1,348,900
Silage, corn	2014	792	28.00	22,176	\$38	\$ 842,700
	2013	681	29.80	20,294	\$42	\$ 852,300
Misc.*	2014					\$2,190,500
	2013					\$2,577,700
Total				2014		\$ 8,923,300
				2013		\$14,027,800

*Misc: Safflower, Barley, Rye Grass, Beans, Sudan Grass,
Rice, Organic Rice, Sweet Corn

COMPARISON SUMMARY

	2010	2011	2012	2013	2014
<u>Fruit & Nut Crops</u>	\$158,851,200	\$158,133,800	\$206,903,200	\$215,608,600	\$280,050,700
<u>Nursery Crops</u>	\$2,931,200	\$11,103,000	\$10,539,900	\$11,083,000*	\$9,779,100
<u>Livestock & Poultry</u>	\$23,109,900	\$25,900,200	\$28,356,100	\$28,353,000	\$40,694,800
<u>Vegetable Crops</u>	\$250,000	\$250,000	\$350,000	\$350,000	\$350,000
<u>Livestock & Poultry Prod.</u>	\$15,387,200	\$15,777,600	\$13,337,300	\$14,700,400	\$18,347,500
<u>Pasture & Range</u>	\$10,144,700	\$13,369,500	\$14,283,700	\$7,824,800	\$13,223,300
<u>Apiary Products</u>	\$7,052,900	\$7,203,400	\$8,882,100*	\$9,570,700	\$7,431,900
<u>Seed Crops</u>	\$555,700	\$1,018,700	\$284,700	\$489,100	\$1,539,700
<u>Field Crops</u>	\$9,288,400	\$12,913,800	\$14,044,600	\$14,027,800	\$8,923,300
TOTALS	\$227,571,200	\$245,670,000	\$296,981,600*	\$302,007,400*	\$380,340,300

*Updated Values to Reflect Correction



ANNUAL SUSTAINABLE AG REPORT

In accordance with Section 2272 of the California Food and Agriculture Code, this Crop Report includes a brief account of efforts, which are being made to exclude or eradicate exotic pests; and to best manage those which already exist, in a manner most conducive to the protection of our environment.

Tehama County land encompasses 1,904,640 acres, which are surveyed by our department for invasive noxious weeds of limited distribution. In 2014, three 'A' rated noxious weeds, of limited distribution were under eradication. The 'A' rated plants include Skeleton Weed, Dalmatian Toad-flax, and Spotted Knapweed. Limited control treatment of the 'B' rated Oblong Spurge, Whitehorse Nettle, Perennial Pepperweed, White Top, and Canada thistle also occurred in 2014.

During 2014, 134 shipments were inspected for compliance with quarantine requirements, resulting in two findings of small hive beetle. During the year, 2,386 various shipments were certified for export to countries around the world.

Pest detection trapping for Mediterranean Fruit Fly, Oriental Fruit Fly, Melon Fly, Japanese Beetle, and Gypsy Moth consisted of 317 traps being deployed, resulting in no finds. One hundred twenty-six Glassy Winged Sharpshooter traps were placed in Tehama County. Inspections of 66 incoming nursery shipments from counties with Glassy Winged Sharpshooter and/or Light Brown Apple Moth were conducted, resulting in no finds. Tehama County continues to actively monitor for the Light Brown Apple Moth; in 2014 there were 70 traps deployed throughout the county with emphasis on nurseries and fields destined for the global market. Additionally, 13 European Grapevine Moth traps were placed into commercial grape vineyards in Tehama County.

There were 27 registered organic growers in Tehama County in 2014, totaling 36,575 acres of registered organic land. Operations range from small gardens catering to local Certified Farmer's Markets to large-scale livestock, dairy, orchard and field crop producers.

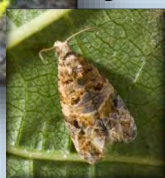


Dalmatian Toadflax

Glassy-Winged Sharpshooter



Light Brown
Apple Moth



Spotted Knapweed



A GLIMPSE INTO THE PAST

Commodity	1964 Totals (amount sold)	2014 Totals (amount sold)	1964 Value	2014 Value
Almonds	740 tons (1,418 acres)	8,384 tons (10,749 acres)	\$451,000	\$48,216,400
Olives (table)	6,540 tons (4,357 acres)	30,483 tons (5,977 acres)	\$1,030,000	\$30,117,200
Prunes	8,670 tons (3,985 acres)	7,041 tons (6,343 acres)	\$2,020,000	\$18,250,300
Walnuts	2,130 tons (3,342 acres)	51,576 tons (24,560 acres)	\$993,000	\$169,375,600
Grapes	*	774 tons (121 acres)	*	\$613,800
Corn	1,630 tons (480 acres)	4,939 tons (882 acres)	\$83,100	\$711,200
Pistachio	*	145 tons (226 acres)	*	\$825,200
Alfalfa	45,600 tons (7,020 acres)	7,814 tons (1,184 acres)	\$1,000,000	\$1,867,500
Misc. Truck Crops			\$12,800	\$350,000
Other Hay	1,890 tons (1,890 acres)	5,050 tons (2,158 acres)	\$21,600	\$1,111,000
Sugar Beets	23,600 tons (1,020 acres)	*	\$278,000	*
Corn Silage	3,800 tons (380 acres)	22,176 tons (792 acres)	\$38,000	\$842,700
Ladino Clover Seed (certified & uncertified)	508,600 lbs (1,993 acres)	*	\$269,400	*
Other Seed (Sudan, Alfalfa)	3,163,000 lbs (2,651 acres)	*	\$273,500	*
Nursery Stock	Olives, Deciduous Fruit and Nut Trees, & Strawberry Plants	Orchard and Christmas Trees, Berry & Bedding Plants	\$507,300	\$9,779,100
Dairy Cattle	6,380 head		\$418,000	\$3,335,800
Beef Cattle	38,400 head	38,295 head	\$3,410,000	\$33,848,200
Dairy Products			\$1,666,000	\$17,757,000
Sheep & Lambs	86,500 head	4,750 head	\$1,180,000	\$679,300
Hogs	14,600 head	1000 head	\$341,000	\$143,500
Chicken Eggs	1,050,000 dozen	*	\$315,000	*
Turkeys	45,000 head	*	\$177,000	*
Year Totals**			\$20,701,700	\$380,340,300

* No correlating values between 1964 and 2014

** Totals will not add to above values listed

TEHAMA COUNTY EXPORTS

In 2014 Tehama County Issued 2,386 USDA Phytosanitary Certificates

Phytosanitary certificates are documents stating said plant or plant product, is free from pests and diseases that are part of the import requirements imposed by countries. Import requirements are designed to protect the importing countries' agricultural industry from insects and diseases which have the potential to arrive with the shipment, additionally ensuring a higher quality product when it reaches its destination.

Products Exported from Tehama County:

Almonds, Beans, Lumber, Pecans, Strawberry Plants, Walnuts, & Walnut Shells

Tehama County shipped products to the below countries in 2014:

Algeria	Argentina	Australia	Austria	Belgium
Brazil	Canada	Chile	China	Colombia
Costa Rica	Cyprus	Czech Republic	Denmark	Egypt
El Salvador	Estonia	Finland	France	Germany
Greece	Guatemala	Hong Kong	India	Indonesia
Israel	Italy	Japan	Jordan	Korea
Kuwait	Latvia	Lebanon	Lithuania	Malaysia
Mexico	Morocco	Nepal	Netherlands	New Zealand
Norway	Pakistan	Panama	Peru	Philippines
Qatar	Russian Federation	San Marino	Saudi Arabia	Singapore
South Africa	Spain	Sri Lanka	Taiwan	Thailand
Tunisia	Turkey	Ukraine	United Arab Emirates	
United Kingdom	Venezuela	Vietnam		



In 2014 Tehama County Issued 15 State Phytosanitary Certificates

Products Included:

Strawberry Plants, Bamboo, Olive Trees

Sent to:

Florida, Missouri, North Carolina, Oregon, Texas

BRIT PUT HIS NAME ON TEHAMA COUNTY HISTORY

By G. Alice Jackson

The origin of our county seal has been a puzzle for many years and has drawn the interest of several people. I believe the art on the seal was done by Brit DeShields, who served as county clerk from 1869 to 1874. He was a popular young man, better educated than most, and with beautiful hand writing.

Charles Britton (or Britam) DeShields was born on Christmas eve, 1841 in Thibodaux, Lafourche Parish, Louisiana, the third of the ten children of Dr. Louis A. and Mary Hebert [various spellings] DeShields. The family moved to Cincinnati, Ohio about 1847, to Nevada about 1851, and to the town of Shasta, California about 1857. Louis was a medical doctor and practiced in Shasta before moving to Red Bluff in 1862.

His marriage to Virginia Hand, daughter of Dr. Edward B. and Anna Margaret Bruce Pollard Hand, on January 31, 1864, is recorded in Tehama County Marriage Book B, page 47. In the marriage record his name is listed as Britton, but for most things he used Brit.

By March 1869 Brit and Jennie, as she was known, had two children when he was appointed to fill the vacant term of Samuel M. Bishop, county clerk. In September of that year he was elected to the office and two years later reelected. In September of 1873 he lost the reelection by 57 votes. He was still serving in the office through February 28, 1874.

Brit DeShield's life was cut short on June 27, 1874, at Belle Mills, probably by tuberculosis, at age 32 years, six months, and three days per his obituary in the *Tehama Independent*. He had unsuccessfully hoped to improve his health by going to the cool mountain air. He was survived by his wife, four children, his mother, and many other family members.

I have a photo copy of correspondence in 1887 from Charles T. Alvord, county clerk, to the State that describes the seal thus "Representing the sun rising over a chain of Mountains (Lassen's Buttes); a level plain, on which a shepherd [sic] and his dog are tending a band of sheep, with the name 'Brit' (the designer of the seal) written near the shepherd [sic]; And a sheaf of wheat."

The *Red Bluff Daily News* of March 20, 1991, featured an article about an attempt to refurbish the county seal and showed a photo with RBIT instead of BRIT. The article states that the seal was made of lead and had worn over the years from use. Suggestions were made to modernize the seal with a cow and/or a prune tree instead of sheep and wheat which were major crops when the first seal was designed. Floyd Hicks wanted the seal preserved, and not changed in design.

Also, in 1991 Rick Robinson, Administrative Assistant to the Board, wrote that the first seal was adopted as the Superior Court seal March 31, 1880, and filed with the State in November 25, 1887, and May 26, 1956.

Email correspondence of November 11, 2005, from Jim Carmickle to Gene Serr indicates that in early 1998 Jim had his son, a graphics artist, clean up the existing seal image while maintaining the integrity of the official seal. This version was used on the Grand Jury Report for 1997-98.

Each reader of this will have to draw their own conclusions, but I have presented information showing that it could have been Brit DeShields whose name is on the seal.

Excerpts from: Tehama County Library – Tehama County Memories 2009, with permission from G. Alice Jackson

About the Author

G. Alice Jackson is a third-generation California native and has collected family history since the age of seventeen. She moved to Red Bluff with her family in 1964 and was one of the first employees of the Sears Catalog Office when it opened at Main and Walnut streets in 1966. After retirement in 1989 from Tehama County Mental Health Services she volunteered at the local Family History Library. With a lifelong interest in California history she finds being Editor of Memories an outlet for her love of historical work.

